


Sources: Esri, Airbus DS, USGS, NGA, NASA, CGIAR, Robinson, NCEAS, NPS, OS, NIM, Rijkswaterstaat, GSA, Geoland, FEMA, Intermap and the GIS user community

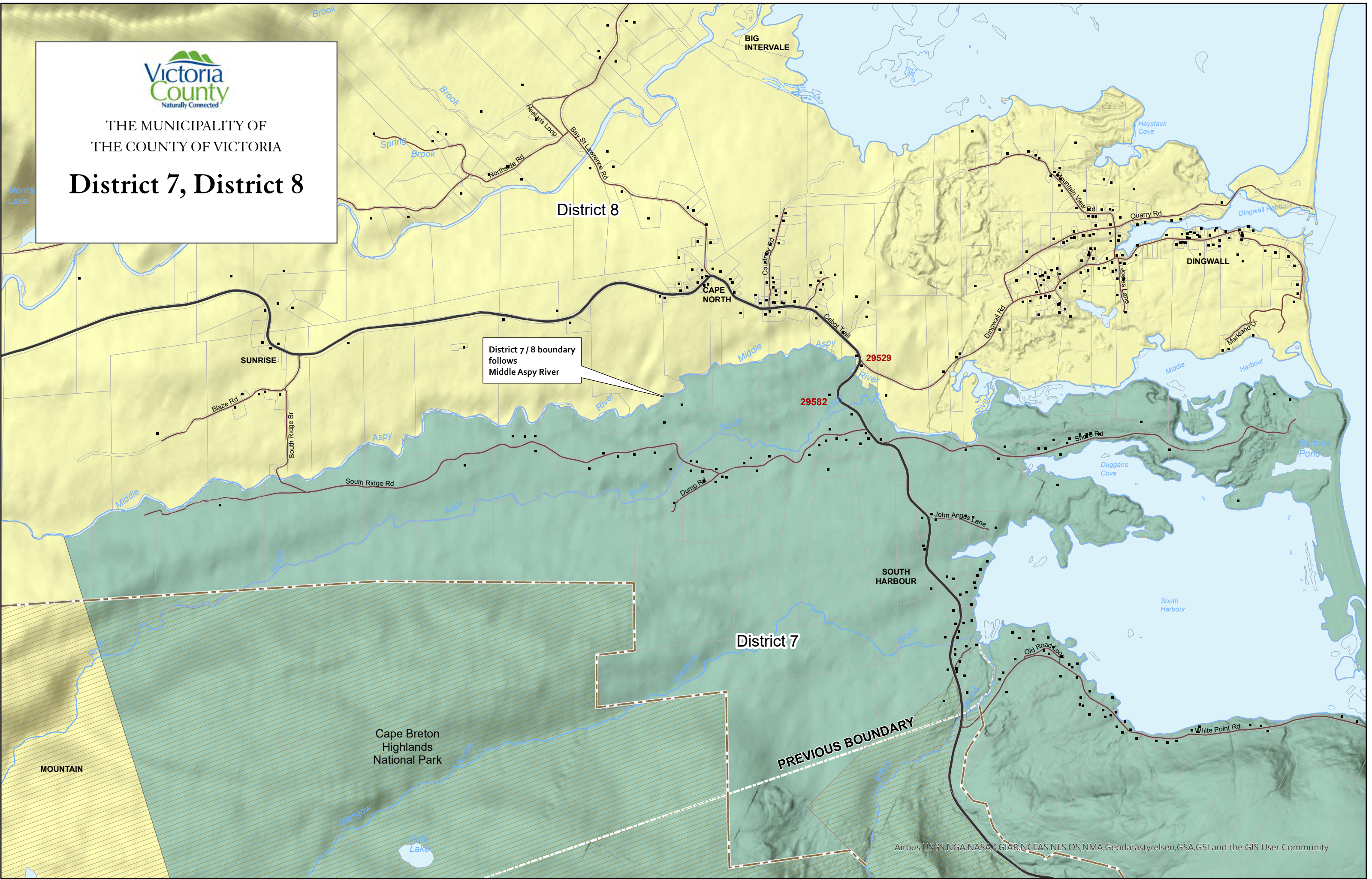
  
 THE MUNICIPALITY OF  
 THE COUNTY OF VICTORIA  
**Districts 7, 8**  
**Boundary Revision**

Airbus, USGS, NGA, NA



THE MUNICIPALITY OF  
THE COUNTY OF VICTORIA

# District 7, District 8



District 7 / 8 boundary follows Middle Aspy River

District 7

District 8

PREVIOUS BOUNDARY



THE MUNICIPALITY OF  
THE COUNTY OF VICTORIA

## District 7

(Note: This map shows the old boundary - refer to maps above for new boundary between District 7 & 8)

36068 Cabot Trail north to Aspy Bridge including Neil's Harbour, New Haven, White Point, Smelt Brook.

