

Sources: Esri, Airbus DS, USGS, NGA, NASA, CGIAR, Robinson, NCEAS, NPS, OS, NIM, Rijkswaterstaat, GSA, Geoland, FEMA, Intermap and the GIS user community

THE MUNICIPALITY OF
THE COUNTY OF VICTORIA

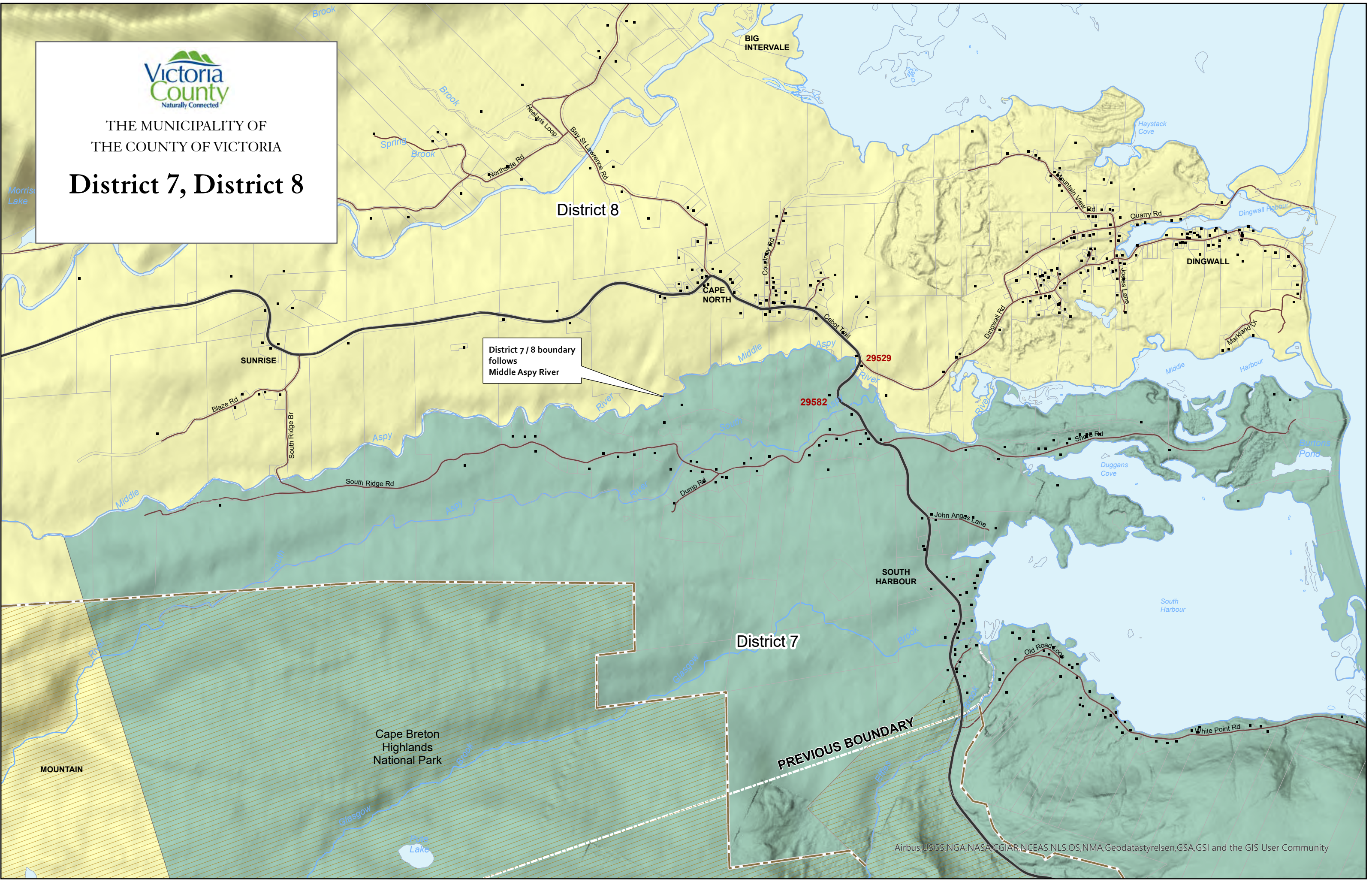
Districts 7, 8 Boundary Revision

Airbus, USGS, NGA, NA



THE MUNICIPALITY OF
THE COUNTY OF VICTORIA

District 7, District 8



District 7 / 8 boundary follows Middle Aspy River

District 7

District 8

PREVIOUS BOUNDARY